

TRASER 2.0

Quick Start Guide

Version 1.0



CONTENTS

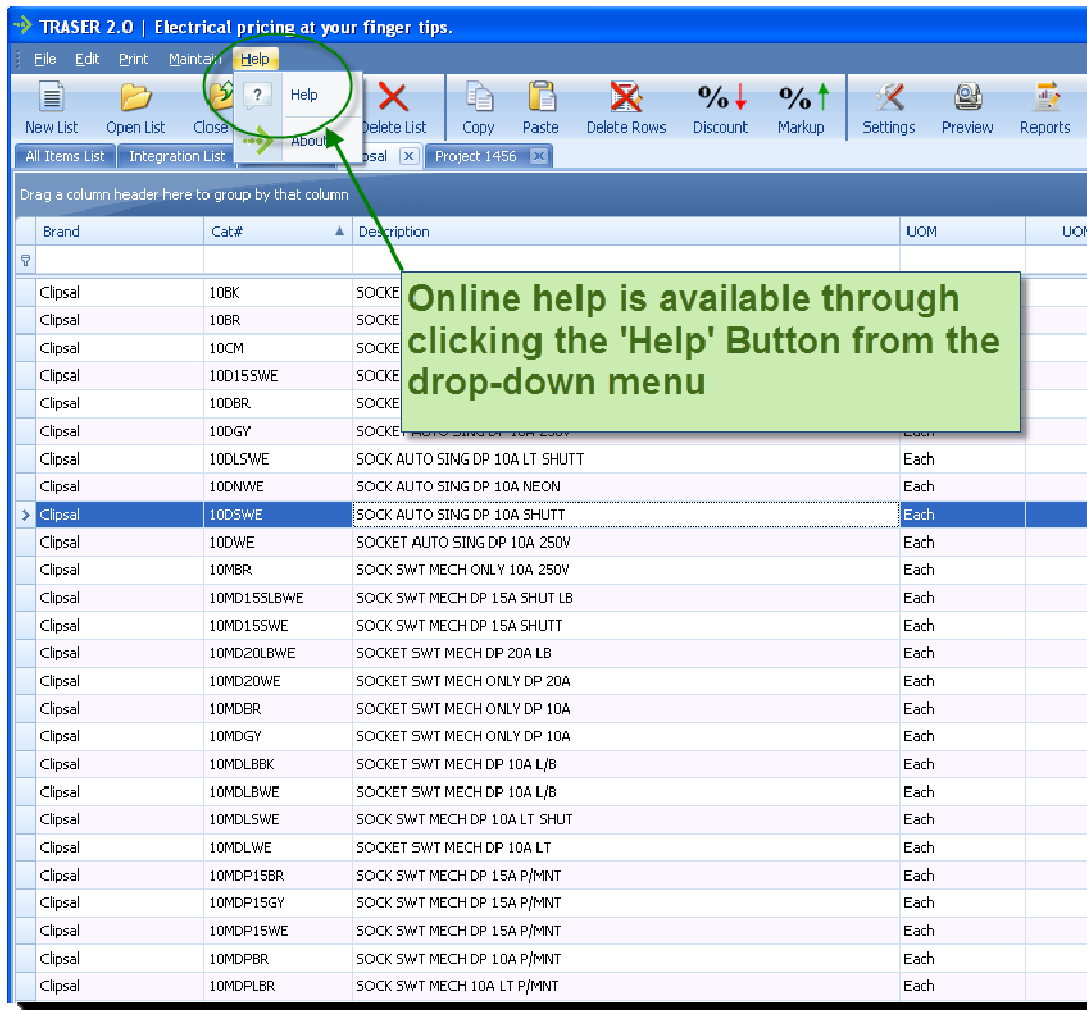
1.	Introduction.....	3
2.	Overview	4
3.	Basic Search	5
4.	Extended Search.....	6
5.	Advanced Search.....	7
6.	Column Functions	8
7.	Selecting Items.....	9
8.	Integration List.....	10
9.	Drop-down Menus.....	11

VERSION HISTORY

Version	Date	Author	Comments
1.0	18/05/2012	Chris Warner	First Draft

1. Introduction

Welcome to the TRASER 2.0, the Electrical Price look-up application and database. Please use this guide as a quick reference to get you started. For more help please click the 'Help' button from within the application.



2. Overview

TRASER 2.0 is designed to have the familiar feel of a spreadsheet:

The screenshot displays the TRASER 2.0 software interface, which is designed to resemble a spreadsheet. Key features are highlighted with green callouts:

- Dropdown Menus:** Located at the top, including File, Edit, Print, Maintain, and Help.
- Toolbar:** Contains icons for New List, Open List, Close List, Save As, Delete List, Copy, Paste, Delete Rows, Discount, Markup, Settings, Preview, Reports, Refresh, and Codes.
- List Tabs:** A row of tabs at the top of the grid area, including All Items List, Integration List, Van List, Project 1456, and Clipsal.
- Column Headers:** A row of headers above the grid, including Brand, Cat#, Description, UOM, UOM Qty, Trade, Discount%, Net Trade, and U11 Price.
- Filter Row:** A blank row at the top of the grid for entering search criteria.
- Status Bar:** Located at the bottom, showing 'Items: 343815' and various filters like 'Items updated in last issue', 'Items deleted in last issue', 'Items created in last issue', 'Items deleted in last 6 months', 'Clear filter', and 'Database is current'.

The main data grid contains the following columns and rows of data:

Brand	Cat#	Description	UOM	UOM Qty	Trade	Discount%	Net Trade	U11OM	U11 Price
ABB	075K50	PROGRAMMING CABLE	Each	1	\$197.60	30.00	\$138.32	EA	\$138.32
ABB	1038F1	FUSE 1A 10x38mm	Each	1	\$7.06	30.00	\$4.94	EA	\$4.94
ABB	1038F10	10AMP CARTRIDGE FUSE FAST ACTING 10.3MM	Each	1	\$7.06	30.00	\$4.94	EA	\$4.94
ABB	1038F16	16AMP CARTRIDGE FUSE FAST ACTING 10.3MM	Each	1	\$7.06	30.00	\$4.94	EA	\$4.94
ABB	1038F2	2AMP CARTRIDGE FUSE FAST ACTING 10.3MM	Each	1	\$7.06	30.00	\$4.94	EA	\$4.94
ABB	1038F20	20AMP CARTRIDGE FUSE FAST ACTING 10.3MM	Each	1	\$7.06	30.00	\$4.94	EA	\$4.94
ABB	1038F25	25AMP CARTRIDGE FUSE FAST ACTING 10.3MM	Each	1	\$7.06	30.00	\$4.94	EA	\$4.94
ABB	1038F32	32AMP CARTRIDGE FUSE FAST ACTING 10.3MM	Each	1	\$7.06	30.00	\$4.94	EA	\$4.94
ABB	1038F4	4AMP CARTRIDGE FUSE FAST ACTING 10.3MM	Each	1	\$7.06	30.00	\$4.94	EA	\$4.94
ABB	1038F6	6AMP CARTRIDGE FUSE FAST ACTING 10.3MM	Each	1	\$7.06	30.00	\$4.94	EA	\$4.94
ABB	1038F8	8AMP CARTRIDGE FUSE FAST ACTING 10.3MM FOR	Each	1	\$7.06	30.00	\$4.94	EA	\$4.94
ABB	141107	630A ENCLOSURENEWSCOM	Each	1	\$2,132.00	30.00	\$1,492.40	EA	\$1,492.40
ABB	1451T16	FUSE 16A 14X51MM	Each	1	\$17.17	30.00	\$12.02	EA	\$12.02
ABB	1451T2	FUSE 2A 14X51MM	Each	1	\$17.17	30.00	\$12.02	EA	\$12.02
ABB	1451T6	FUSE 6A 14X51MM	Each	1	\$17.17	30.00	\$12.02	EA	\$12.02
ABB	16019447	M1173 PRESA SCHUKO(I)	Each	1	\$11.60	30.00	\$29.12	EA	\$29.12
ABB	16072065	RELAY RD148 RESIDUAL CURRENT 24VAC	Each	1	\$736.42	30.00	\$494.49	EA	\$494.49
ABB	16072073	RD RESIDUAL CURRENT RELAY 115/230V AC RD148	Each	1	\$736.42	30.00	\$494.49	EA	\$494.49
ABB	16072099	RD RESIDUAL CURRENT RELAY 115/230/400V AC RD196	Each	1	\$739.02	30.00	\$517.32	EA	\$517.32
ADD	16072110	RD RESIDUAL CURRENT RELAY 115/230/400V AC RD290	Each	1	\$910.02	30.00	\$601.00	EA	\$601.00
ABB	16078116	NETWORK ANALYZER, MTME 485 SUI LCD 96	Each	1	\$2,822.18	30.00	\$1,855.71	EA	\$1,855.71
ABB	16078252	MTM-96 DIGITAL MEASURING DEVICE	Each	1	\$1,488.24	30.00	\$1,041.77	EA	\$1,041.77
ABB	16078260	METER MTME-96 M-FUNCT	Each	1	\$1,488.24	30.00	\$1,041.77	EA	\$1,041.77
ABB	16078286	METER M-FUNCT MTME-485-96	Each	1	\$2,314.00	30.00	\$1,619.80	EA	\$1,619.80
ABB	16078294	METER MTME-485-LCD-96	Each	1	\$1,956.24	30.00	\$1,369.37	EA	\$1,369.37
ABB	16087782	RD RESIDUAL CURRENT RELAY MOUNT ACC. COP-96	Each	1	\$130.42	30.00	\$91.29	EA	\$91.29
ABB	16087790	RD RESIDUAL CURRENT RELAY MOUNT ACC. COP-72	Each	1	\$130.42	30.00	\$91.29	EA	\$91.29
ABB	16088525	RD RESIDUAL CURRENT RELAY 115/230/400V AC RD272	Each	1	\$736.42	30.00	\$494.49	EA	\$494.49
ABB	16088608	RD RESIDUAL CURRENT RELAY 115/230/400V AC RD296DIG	Each	1	\$1,032.46	30.00	\$722.72	EA	\$722.72
ABB	16089184	RD RESIDUAL CURRENT RELAY 115/230V AC RD172	Each	1	\$736.42	30.00	\$494.49	EA	\$494.49
ABB	170H1007	HOLD FUSE BUSSMANN 1P	Each	1	\$238.00	30.00	\$145.60	EA	\$145.60
ABB	170H3004	HOLDER FUSE BUSSMANN 1POLE	Each	1	\$254.00	30.00	\$254.80	EA	\$254.80
ABB	170M1366	FUSE 80A BUSSMANN THYRISTOR	Each	1	\$238.00	30.00	\$145.60	EA	\$145.60
ABB	170M1368	FUSE 125A BUSSMANN THYRISTOR	Each	1	\$238.00	30.00	\$145.60	EA	\$145.60
ABB	170M1369	FUSE 160A BUSSMANN THYRISTOR	Each	1	\$223.60	30.00	\$156.52	EA	\$156.52
ABB	170M1370	FUSE 200A BUSSMANN THYRISTOR	Each	1	\$249.60	30.00	\$174.72	EA	\$174.72
ABB	170M1371	FUSE 250A BUSSMANN THYRISTOR	Each	1	\$249.60	30.00	\$174.72	EA	\$174.72

Grid: This contains the Rows and Columns of data which can be viewed

List Tabs: Similarly to a spreadsheet, you are able to create multiple lists. You are able to navigate from one list to another by clicking on the relevant List Tab.

Filter Row: This blank row at the top of the Grid is where you would conduct your primary search. This is achieved by filtering each column according to your search criteria.

3. Basic Search

TRASER 2.0 | Electrical pricing at your finger tips.

File Edit Print Maintain Help

New List Open List Close List Save As Delete List Copy Paste Delete Rows Discount Markup Settings Preview Reports Refresh Codes

All Items List Integration List Van List Project 1456 Close

Drag a column header here to group by that column

Brand	Cat#	Description	UOM	UOM Qty	Trade	Discount%	Net Trade	LUOM	LU Price
Olex	HTMC22AA004	XLPE 4x95MMs -E XLPE/PVC/SW/PVC	100 Metres	100	\$16,386.03	C.00	\$16,386.03	MR	\$163.86
Olex	HTMC20AA004	XLPE 4x70MMs -E XLPE/PVC/SW/PVC	100 Metres	100	\$12,413.13	C.00	\$12,413.13	MR	\$124.13
Olex	HTMP2AA004	XLPE 4x240MMs +E XLPE/PVC/SW/PVC	11U Metres	100	\$46,276.77	L.00	\$46,276.77	MR	\$462.77
Olex	HTMP23AA004	XLPE 4x120MMs +E XLPE/PVC/SW/PVC	100 Metres	100	\$21,625.25	C.00	\$21,625.25	MR	\$216.25
Olex	FTMC22AA003	XLPE 3x95MMs -E XLPE/PVC/SW/PVC	100 Metres	100	\$12,498.48	C.00	\$12,498.48	MR	\$124.98
Olex	FTMC20AA003	XLPE 3x70MMs -E XLPE/PVC/SW/PVC	100 Metres	100	\$9,630.64	L.00	\$9,630.64	MR	\$96.31
Olex	FTMC19AA003	XLPE 3x50MMs -E XLPE/PVC/SW/PVC	100 Metres	100	\$7,171.75	C.00	\$7,171.75	MR	\$71.75
Olex	FTMC18AA003	XLPE 3x35MMs -E XLPE/PVC/SW/PVC	100 Metres	100	\$5,549.59	C.00	\$5,549.59	MR	\$54.99
Olex	FTMF25AA003	XLPE 3x25MMs -E XLPE/PVC/SW/PVC	100 Metres	100	\$262.78	C.00	\$262.78	MR	\$2.63
Olex	FTMF24AA003	XLPE 3x18MMs -E XLPE/PVC/SW/PVC	100 Metres	100	\$200.31	C.00	\$200.31	MR	\$2.00
Olex	FTMF23AA003	XLPE 3x14MMs -E XLPE/PVC/SW/PVC	100 Metres	100	\$153.54	C.00	\$153.54	MR	\$1.54
Olex	BDBC22AA001	XLPE 1x240MMs XLPE/H	100 Metres	100	\$27.62	C.00	\$27.62	MR	\$0.28
Olex	BDBA22AA001	XLPE 1x120MMs XLPE/H	100 Metres	100	\$12.20	C.00	\$12.20	MR	\$0.12
Olex	BDBC20AA001	XLPE 1x95MMs XLPE/H	100 Metres	100	\$19.29	C.00	\$19.29	MR	\$0.19
Olex	BDBA20AA001	XLPE 1x70MMs XLPE/H	100 Metres	100	\$9.41	C.00	\$9.41	MR	\$0.09
Olex	DDDC19AA001	XLPE 1x50MMs XLPE/H	100 Metres	100	\$14.02	C.00	\$14.02	MR	\$0.14
Olex	RDBA30AA001	XLPE 1x240MMs XLPE/H	100 Metres	100	\$43.39	C.00	\$43.39	MR	\$0.43
Olex	BDBA28AA001	XLPE 1x120MMs XLPE/H	100 Metres	100	\$33.81	C.00	\$33.81	MR	\$0.34
Olex	DDDC10AA001	XLPE 1x10MMs XLPE/H	100 Metres	100	\$10.72	C.00	\$10.72	MR	\$0.11
Olex	RDBC17AA001	XLPE 1x175MMs XLPE/H	100 Metres	100	\$8.74	C.00	\$8.74	MR	\$0.09
Olex	BDBA25AA001	XLPE 1x25MMs XLPE/H	100 Metres	100	\$18.21	C.00	\$18.21	MR	\$0.18
Olex	DDDP23AA001	XLPE 1x23MMs XLPE/H	100 Metres	100	\$35.20	C.00	\$35.20	MR	\$0.35
Olex	RDBA23AA001	XLPE 1x230MMs XLPE/H	100 Metres	100	\$15.24	C.00	\$15.24	MR	\$0.15
Olex	FTTX07AA003	VERSOLEX 3x95MMs +3E XLP/TFE/BRAID/TPE	100 Metres	100	\$16,133.29	C.00	\$16,133.29	MR	\$161.53
Olex	FTTX06AA003	VERSOLEX 3x70MMs +3E XLP/TFE/BRAID/TPE	100 Metres	100	\$13,607.41	C.00	\$13,607.41	MR	\$136.07
Olex	FTTR07AA003	VERSOLEX 3x6MMs +3E XLP/TFE/BRAID/TPE	100 Metres	100	\$2,424.48	C.00	\$2,424.48	MR	\$24.24
Olex	FTTX05AA003	VERSOLEX 3x50MMs +3E XLP/TFE/BRAID/TPE	100 Metres	100	\$8,656.92	C.00	\$8,656.92	MR	\$86.57
Olex	FTTX04AA003	VERSOLEX 3x35MMs +3E XLP/TFE/BRAID/TPE	100 Metres	100	\$7,139.02	C.00	\$7,139.02	MR	\$71.39
Olex	FTTX03AA003	VERSOLEX 3x25MMs +3E XLP/TFE/BRAID/TPE	100 Metres	100	\$5,133.43	C.00	\$5,133.43	MR	\$51.33
Olex	FTTX02AA003	VERSOLEX 3x16MMs +3E XLP/TFE/BRAID/TPE	100 Metres	100	\$3,697.34	C.00	\$3,697.34	MR	\$36.97
Olex	FTTX01AA003	VERSOLEX 3x10MMs +3E XLP/TFE/BRAID/TPE	100 Metres	100	\$3,573.71	C.00	\$3,573.71	MR	\$35.74
Olex	BZHE93AA001	VERSOLEX 1x500MMs XLPE/H	100 Metres	100	\$146.65	C.00	\$146.65	MR	\$1.47
Olex	BZHE92AA001	VERSOLEX 1x400MMs XLPE/H	100 Metres	100	\$111.63	C.00	\$111.63	MR	\$1.12
Olex	BZHE91AA001	VERSOLEX 1x300MMs XLPE/H	100 Metres	100	\$67.75	C.00	\$67.75	MR	\$0.68
Olex	BZHE90AA001	VERSOLEX 1x240MMs XLPE/H	100 Metres	100	\$72.68	C.00	\$72.68	MR	\$0.73
Olex	BZHE89AA001	VERSOLEX 1x185MMs XLPE/HFS-TP	100 Metres	100	\$5,657.76	C.00	\$5,657.76	MR	\$56.58

Items: 395

Starts with([Brand], 'olex')

Legend: ■ Items updated in last issue ■ Items deleted in last issue ■ Items created in last issue ■ Items deleted in last 6 months ■ Clear filter ✓ Database is current

Basic search:

Type the search criteria into the 'Filter Row' under the appropriate 'Column Heading'.

In this example we have typed "olex" under the Brand column.

This search will filter and display all OLEX items.

Note: the 'Edit Filter Row' status indicates which filter operations are currently in place.

4. Extended Search

TRASER 2.0 | Electrical pricing at your finger tips.

File Edit Print Maintain Help

New List Open List Close List Save As Delete List Copy Paste Delete Rows Discount Markup Settings Preview Reports Refresh Codes

All Items List Integration List Van List Project 1456 Clipsal

Drag a column header here to group by that column

Brand	Cat.#	Description	UOM	UOM Qty	Trade	Discount%	Net Trade	UOM	LU Price
olex		70mm							
Olex	HTMC20AA004	XLPE 4x70MMs +E XLPE/PVC/SW/PVC	100 Metres	100	\$12,413.13	0.00	\$12,413.13	MR	\$124.13
Olex	FTMC20AA003	XLPE 3x70MMs +E XLPE/PVC/SW/PVC	100 Metres	100	\$9,630.64	0.00	\$9,630.64	MR	\$96.31
Olex	BOBC20AA001	XLPE 1x70MMs XLPE/PVC	100 Metres	100	\$1,928.99	0.00	\$1,928.99	MR	\$19.29
Olex	FTT06AA003	VERSOLEX 3x70MMs +3E XLP/TPE/BRAID/TPE	100 Metres	100	\$13,607.41	0.00	\$13,607.41	MR	\$136.07
Olex	PFKP20AA001	PYR 1x70MMs CERAM/HFS-TP	100 Metres	100	\$2,613.07	0.00	\$2,613.07	MR	\$26.13
Olex	PEK206AA001	MS 1x70MMs CERAM/HFS-TP FLEX	100 Metres	100	\$2,572.39	0.00	\$2,572.39	MR	\$25.72
Olex	BAAC20AA001	70MM 13/2.14 CU BUILDING WIRE	100 Metres	100	\$2,171.52	0.00	\$2,171.52	MR	\$21.72
Olex	H1HC20AA004	70MM 13/2.14 4C+E XLPE/PVC CIRCULAR	100 Metres	100	\$11,112.12	0.00	\$11,112.12	MR	\$111.12
Olex	HNMC20AA004	70MM 13/2.14 4C+E PVC/PVC SWA	100 Metres	100	\$12,413.13	0.00	\$12,413.13	MR	\$124.13
Olex	HNHC20AA004	70MM 13/2.14 4C+E PVC/PVC SWA	100 Metres	100	\$12,413.13	0.00	\$12,413.13	MR	\$124.13
Olex	FTHC20AA003	70MM 13/2.14 3C+E XLPE/PVC	100 Metres	100	\$11,112.12	0.00	\$11,112.12	MR	\$111.12
Olex	FTDC20AA003	70MM 13/2.14 3C+E XLPE/PVC	100 Metres	100	\$11,112.12	0.00	\$11,112.12	MR	\$111.12
Olex	FNMC20AA003	70MM 13/2.14 3C+E XLPE/PVC	100 Metres	100	\$11,112.12	0.00	\$11,112.12	MR	\$111.12
Olex	FNHC20AA003	70MM 13/2.14 3C+E XLPE/PVC	100 Metres	100	\$11,112.12	0.00	\$11,112.12	MR	\$111.12
Olex	BDSX06AA001	70MM 0.6/1KV SINGLE	100 Metres	100	\$11,112.12	0.00	\$11,112.12	MR	\$111.12

Extended search:

Type the search criteria into the 'Filter Row' under the appropriate 'Column Headings'.

In this example we have typed "olex" and "70mm".

This search will filter and display all OLEX brand items with "70mm" contained in the Description Column.

Items: 15

Starts with([Brand], 'olex') And Contains([Description], '70mm')

Legend: ■ Items updated in last issue ■ Items deleted in last issue ■ Items created in last issue ■ Items deleted in last 6 months ■ Clear filter ✓ Database is current

5. Advanced Search

TRASER 2.0 | Electrical pricing at your finger tips.

File Edit Print Maintain Help

New List Open List Close List Save As Delete List Copy Paste Delete Rows Discount Markup Settings Preview Reports Refresh Codes

All Items List Integration List Van List Project: 1456 Close

Drag a column header here to group by that column

Brand	Cat#	Description	UOM	UOM Qty	Trade	Discount%	Net Trade	LUOM	LU Price
Olex	PEK20AA001	TYR 1x70MMs CERAM/HFS TP	100 Metres	100	\$2,613.07	0.00	\$2,613.07	MR	\$26.13
Olex	PEK06AA001	ALS 1x70MMs CERAM/HFS-TP FLEX	100 Metres	100	\$2,572.39	0.00	\$2,572.39	MR	\$25.72

Filter Editor

And

- [Brand] Begins with olex
- [Description] Contains 70mm
- [Cat#] Begins with PEK

OK Cancel Apply

Step 2: Enter the required filter criteria in the Filter Editor. Click "Apply"

For an Advanced Search:

Step 1 - Click the "Edit Filter" link and the "Filter Editor" window will pop up.

Items: 2

Starts with([Brand], 'olex') And Contains([Description], '70mm') And Starts with([Cat#], 'PEK')

Legend: ■ Items updated in last issue ■ Items deleted in last issue ■ Items created in last issue ■ Items deleted in last 6 months Clear filter Database is current

Filter Filter

6. Column Functions

TRASER 2.0 | Electrical pricing at your finger tips.

File Edit Print Maintain Help

New List Open List Close List Save As Delete List Copy Paste Delete Rows Discount Markup Settings Preview Reports Refresh Codes

All Items List Integration List Van List Project: 1496 Clipsal

Drag a column header here to group by that column

brand	Cat#	Description	UOM	UOM Qty	Trade	Discount%	LUOM	non-used	price
olex	pelex								
Olex	PEX70AA001	ALS 1x500MMs CERAM/HFS-TP FLEX	100 Metres	100	\$17,250.81	0.00	MR		
Olex	PEX69AA001	ALS 1x400MMs CERAM/HFS-TP FLEX	100 Metres	100	\$12,151.10	0.00	MR		51
Olex	PEX68AA001	ALS 1x300MMs CERAM/HFS-TP FLEX	100 Metres	100	\$9,569.02	0.00	MR		51
Olex	PEX11AA001	ALS 1x240MMs CERAM/HFS-TP FLEX	100 Metres	100	\$7,917.91	0.00	MR		69
Olex	PEX10AA001	ALS 1x185MMs CERAM/HFS-TP FLEX	100 Metres	100	\$6,172.10	0.00	MR		18
Olex	PEX09AA001	ALS 1x150MMs CERAM/HFS-TP FLEX	100 Metres	100	\$5,134.65	0.00	MR		72
Olex	PEX08AA001	ALS 1x120MMs CERAM/HFS-TP FLEX	100 Metres	100	\$4,255.80	0.00	MR		35
Olex	PEX07AA001	ALS 1x95MMs CERAM/HFS-TP FLEX	100 Metres	100	\$3,473.72	0.00	MR		56
Olex	PEX06AA001	ALS 1x70MMs CERAM/HFS-TP FLEX	100 Metres	100	\$2,572.39	0.00	MR		74
									72

Column Functions:

1. Place your cursor on the 'Column Heading' you have chosen to operate on.
2. Right click your mouse button and the drop down menu will appear.
3. Select your operation

Items: 9

Starts with([Brand], 'olex') And Starts with([Cat#], 'pelex')

Legend: ■ Items updated in last issue ■ Items deleted in last issue ■ Items created in last issue ■ Items deleted in last 6 months ■ Clear filter ✓ Database is current

7. Selecting Items

TRASER 2.0 | Electrical pricing at your finger tips.

File Edit Print Maintain Help

New List Open List Close List Save As Delete List Copy Paste Delete Rows Discount Markup Settings Preview Reports Refresh Codes

All Items List | In Progress List | Project: 1456 | Clipsal | Van List

Drag a column header here to group by that column

Brand	Cat.#	Description
Olex	AAEP02AA001	1.0MM 1/1.13 DOUBLE INS. PVC/PVC
Olex	AAEP05AA001	1.5MM 2/0.50 DOUBLE INS. PVC/PVC
Olex	AAEP07AA001	2.5MM 7/0.67 DOUBLE INS. PVC/PVC
Olex	AAEP09AA001	4MM 7/0.85 DOUBLE INS. PVC/PVC
Olex	AAEP11AA001	6MM 7/1.04 DOUBLE INS. PVC/PVC
Olex	AAEP13AA001	10MM 7/1.35 DOUBLE INS. PVC/PVC
Olex	AAEP15AA001	16MM 7/1.70 DOUBLE INS. PVC/PVC
Olex	AATP05AA001	1.5MM 7/0.50 CU EARTH WIRE
Olex	AATP07AA001	2.5MM 7/0.67 CU EARTH WIRE
Olex	APAR02AA005	0.75MM 24/0.20 5C OD CU FLEX
Olex	APAR03AA005	1MM 32/0.20 5C OD CU FLEX
Olex	APAR04AA005	1.5MM 30/0.25 5C OD CU FLEX
Olex	APAR05AA005	2.5MM 50/0.25 5C OD CU FLEX
Olex	APAR06AA005	4MM 56/0.30 5C OD CU FLEX
Olex	BAAC17AA001	25MM 19/1.35 CU BUILDING WIRE
Olex	BAAC18AA001	35MM 19/1.53 CU BUILDING WIRE
Olex	BAAC19AA001	50MM 19/1.78 CU BUILDING WIRE
Olex	BAAC20AA001	70MM 19/2.14 CU BUILDING WIRE
Olex	BAAC22AA001	95MM 37/1.78 CU BUILDING WIRE
Olex	BAAP02AA001	1.0MM 1/1.13 CU BUILDING WIRE
Olex	BAAP05AA001	1.5MM 7/0.50 CU BUILDING WIRE
Olex	BAAP07AA001	2.5MM 7/0.67 CU BUILDING WIRE
Olex	BAAP09AA001	4MM 7/0.85 CU BUILDING WIRE
Olex	BAAP11AA001	6MM 7/1.04 CU BUILDING WIRE
Olex	BAAP13AA001	10MM 7/1.35 CU BUILDING WIRE
Olex	BAAP15AA001	16MM 7/1.70 CU BUILDING WIRE
Olex	BAAP23AA001	120MM 37/2.03 CU BUILDING WIRE
Olex	BAAR02AA001	0.75MM 24/0.20 SINGLE CORE V90 PVC
Olex	BAAR03AA001	1MM 32/0.20 SINGLE CORE V90 PVC
Olex	BAAR04AA001	1.5MM 30/0.25 SINGLE CORE V90 PVC
Olex	BAAR05AA001	2.5MM 50/0.25 SINGLE CORE V90 PVC

	100 Metres	100	\$302.15	0.00	MR	\$302.15	\$3.02
Olex	100 Metres	100	\$481.09	0.00	MR	\$481.09	\$4.81
Olex	100 Metres	100	\$3,607.28	0.00	MR	\$3,607.28	\$36.07
Olex	100 Metres	100	\$40.00	0.00	MR	\$40.00	\$0.40
Olex	100 Metres	100	\$48.81	0.00	MR	\$48.81	\$0.49
Olex	100 Metres	100	\$71.05	0.00	MR	\$71.05	\$0.71
Olex	100 Metres	100	\$110.63	0.00	MR	\$110.63	\$1.11

Items: 395

Starts with([Brand], 'olex')

Legend: ■ Items updated in last issue ■ Items deleted in last issue ■ Items created in last issue ■ Items deleted in last 6 months ✓ Database is current

Selecting items:

Items can be selected through standard Windows commands:

- To select a consecutive group of items, click the first item, press and hold down the **Shift** key, and then click the last item.
- To select non-consecutive items, press and hold down the **Ctrl** key, and then click each item that you want to select.
- To select all items, press and hold down the **Ctrl** key + **A**

You can now perform certain operations on these selected items such as "drag and drop" the items into any list

8. Integration List

TRASER 2.0 | Electrical pricing at your finger tips.

File Edit Print Maintain Help

New List Open List Close List Save As Delete List Copy Paste Delete Rows Discount Markup Settings Preview Reports Refresh Codes

All Items List **Integration List** Project 1456 Clipsal Van List

Drag a column header here to group by that column

Brand	Cat.#	Description	Source List	UOM	Per	Trade	Discount%	Net Trade	LUOM	LU Price
Olex	AATP05AA001	1.5MM 7/0.50 CU EARTH WIRE	All Items	100 Metres	100	\$57.45	0.00	\$57.45	MR	\$0.57
Olex	AATP07AA001	2.5MM 7/0.67 CU EARTH WIRE	All Items	100 Metres	100	\$92.73	0.00	\$92.73	MR	\$0.93
Olex	APAR02AA005	0.75MM 24/0.20 5C OD CU FLEX	All Items	100 Metres	100	\$248.67	0.00	\$248.67	MR	\$2.49
Olex	APAR03AA005	1MM 02/0.20 5C OD CU FLEX	All Items	100 Metres	100	\$200.06	0.00	\$200.06	MR	\$2.00
Olex	APAR04AA005	1.5MM 30/0.25 5C OD CU FLEX	All Items	100 Metres	100	\$401.12	0.00	\$401.12	MR	\$4.01
Olex	APAR05AA005	2.5MM 50/0.25 5C OD CU FLEX	All Items	100 Metres	100	\$401.12	0.00	\$401.12	MR	\$4.01
Utlux Pty Ltd	#103	Crimp Tool Ratchet Type for CU Lugs & Links 0.2mm-								
Utlux Pty Ltd	CG70FLM10/25	COPPER FLARED LUG 70MMs CABLE M10 STUD								
Utlux Pty Ltd	CG70FLM12	CU Flared Lug, 70MMs Cable, M12								
Utlux Pty Ltd	CG70FLM12/25	COPPER FLARED LUG 70MMs CABLE M12 STUD								
Utlux Pty Ltd	CG70M20	CU Crimp Lug, 70MMs Cable, M20 (H1439)								
Utlux Pty Ltd	CG70NPM10/25	COPPER NARROW PALM LUG 70MMs CABLE M10 STUD								
Utlux Pty Ltd	CKB400	CU Barrier Link, 400MMs Cable - H1797								
Utlux Pty Ltd	CKB50	CU Barrier Link, 50MMs Cable - H1770, 25 Box								
Utlux Pty Ltd	CKB500	CU Barrier Link, 500MMs Cable - H1798								
Utlux Pty Ltd	CKR35-16/1	COPPER REDUCING LINK 35-16MMs CABLE								
Utlux Pty Ltd	CKR3525	CU Reducing Link, 35-25MMs Cable								
Utlux Pty Ltd	CKR35-25/1	COPPER REDUCING LINK 35-25MMs CABLE								
Utlux Pty Ltd	CP4055	WIRE CABLE GRIP 40-55mm SINGLE								
Utlux Pty Ltd	CP5575	WIRE CABLE GRIP 55-75mm SINGLE								
Utlux Pty Ltd	CP7595	WIRE CABLE GRIP 75-95mm SINGLE								
Utlux Pty Ltd	CT1002K	Cable Tie Nylon Natural 102mm x 2.5mm [Pk.1000]								
Utlux Pty Ltd	CT1002K/10	Cable Tie Nylon Natural 102mm x 2.5mm [Pk.1000]								
Utlux Pty Ltd	CT1002W	Cable Tie Nylon Black UV 102mm x 2.5mm [Pk.100]								
Utlux Pty Ltd	D893E	HARMONY CHIME	All Items	Each	1	\$62.57	0.00	\$62.57	EA	\$62.57
Utlux Pty Ltd	D852E	CHORUS CHIME	All Items	Each	1	\$108.41	0.00	\$108.41	EA	\$108.41
Clipsal	2025DWE	SOCKET SWT TWIN DP 10A SHUTT	All Items	Each	1	\$60.88	0.00	\$60.88	EA	\$60.88
Clipsal	2025DWE	SOCK SWT TWIN DPOLE 10A250V	All Items	Each	1	\$45.38	0.00	\$45.38	EA	\$45.38
Clipsal	2025GR	SOCKET SWT TWIN 10A 250V	All Items	Each	1	\$21.11	0.00	\$21.11	EA	\$21.11
Clipsal	2025GRRC/PTDWE	SOCKET RCD/PR IN GR(4MM)	All Items	Each	1	\$24.70	0.00	\$24.70	EA	\$24.70
Clipsal	2025GY	SOCKET SWT TWIN 10A 250V	All Items	Each	1	\$21.11	0.00	\$21.11	EA	\$21.11
Clipsal	2025H2BK	SOCKT HORIZ TWIN 2G & SURROUND	All Items	Each	1	\$43.51	0.00	\$43.51	EA	\$43.51

Items: 43

Legend: ■ Items updated in last issue ■ Items deleted in last issue ■ Items created in last issue ■ Items Deleted in last 6 months 2 Clear Filter ✔ Database is current

Integration List:

This list is populated by you.

You select items from any of the other lists and add them to this list by "dragging and dropping".

The list would contain all items that you would like to be created and maintained in the application/s which integrate with TRASER 2.0

This is a view of the sub-set of items that are relevant to you.

9. Drop-Down Menus

List v Grid Drop-down menu:
 A drop-down menu with functions relevant to a list can be displayed by placing your cursor on the required list tab and right-clicking.
 Right-clicking in the grid will provide functions relevant to the selected rows

Brand	Cat#	UOM	UOM Qty	Trade	Discount%	LUOM	Net Trade	LU Price	
Aichi	41WC3FD	Each	1	\$2,000.00	0.00	EA	\$2,000.00	\$2,000.00	
Aichi	41WC4FD	Each	1	\$2,280.00	0.00	EA	\$2,280.00	\$2,280.00	
Aichi	41WNC3F	Each	1	\$2,370.00	0.00	EA	\$2,370.00	\$2,370.00	
Aichi	41WNC4F								
Aichi	43WC3FD								
Aichi	43WC4FD								
Aichi	43WNC3F								
Aichi	43WNC4F								
Aichi	45WC3FD								
Aichi	45WC4FD								
Aichi	45WNC3F								
Aichi	45WNC4F								
Aichi	46WC3FD								
Aichi	46WC4FD								
Aichi	46WNC3F								
Aichi	46WNC4F								
Aichi	610WN3FD240V								
Aichi	610WN4FD240V								
Aichi	610WN3FD240VAC								
Aichi	610WN4FD240VAC								
Aichi	612WNA3	Each	1	\$17,020.00	0.00	EA	\$17,020.00	\$17,020.00	
Aichi	612WNA4	Each	1	\$16,170.00	0.00	EA	\$16,170.00	\$16,170.00	
Aichi	61-64WH4	Each	1	\$18,820.00	0.00	EA	\$18,820.00	\$18,820.00	
Aichi	616WN3F	Each	1	\$280.13	0.00	EA	\$280.13	\$280.13	
Aichi	616WN3F	Each	1	\$17,300.00	0.00	EA	\$17,300.00	\$17,300.00	
Aichi	616WN3F	Each	1	\$17,300.00	0.00	EA	\$17,300.00	\$17,300.00	
Aichi	616WN4F	Each	1	\$20,670.00	0.00	EA	\$20,670.00	\$20,670.00	
Aichi	61W3FD1	Each	1	\$2,610.00	0.00	EA	\$2,610.00	\$2,610.00	
Aichi	61W3FD2	Each	1	\$2,610.00	0.00	EA	\$2,610.00	\$2,610.00	
Aichi	61W4FD2	Each	1	\$2,980.00	0.00	EA	\$2,980.00	\$2,980.00	
Aichi	61WN3FD	Each	1	\$3,100.00	0.00	EA	\$3,100.00	\$3,100.00	
Aichi	61WN4FD	Each	1	\$4,129.25	0.00	EA	\$4,129.25	\$4,129.25	
Aichi	620WN3B	Each	1	\$28,930.00	0.00	EA	\$28,930.00	\$28,930.00	
Aichi	620WN4B	Each	1	\$33,060.00	0.00	EA	\$33,060.00	\$33,060.00	
Aichi	62W3FD4	Each	1	\$3,720.00	0.00	EA	\$3,720.00	\$3,720.00	
Aichi	62W4FD2	Each	1	\$4,510.00	0.00	EA	\$4,510.00	\$4,510.00	
Aichi	62WN3FD	Each	1	\$4,280.00	0.00	EA	\$4,280.00	\$4,280.00	
Aichi	62WN4FD	Each	1	\$5,110.00	0.00	EA	\$5,110.00	\$5,110.00	
Aichi	630WN3B	Each	1	\$45,480.00	0.00	EA	\$45,480.00	\$45,480.00	
Aichi	630WN4BD240VAC	TRANS.SW.WJ-OFF3000A4POLE240VA	Each	1	\$55,340.00	0.00	EA	\$55,340.00	\$55,340.00

Items: 55

Legend: ■ Items updated in last issue ■ Items deleted in last issue ■ Items created in last issue ■ Items deleted in last 6 months ■ Clear filter ✓ Database is current