

# **TRASER 2.0**

## **Installation Document**

**Version 1.1**



## CONTENTS

1.	Introduction.....	3
2.	Downloading TRASER 2.0 .....	3
3.	Installing TRASER 2.0.....	4
4.	Running TRASER 2.0 .....	11
5.	Registering TRASER 2.0.....	11
6.	Setting up Database for TRASER 2.0.....	12
7.	Running Initial Load into TRASER 2.0 .....	19

## VERSION HISTORY

<b>Version</b>	<b>Date</b>	<b>Author</b>	<b>Comments</b>
1.0	15/05/2012	Anuj Sareen	First Draft
1.1	01/02/2013	Anuj Sareen	Download fix

## 1. Introduction

Welcome to the TRASER 2.0 installation guide. This guide will give you an overview of what to expect when installing the TRASER 2.0 on your computer.

## 2. Downloading TRASER 2.0

The first step is to download TRASER 2.0 application executable (exe) file from the Trade Service of Australia website. You should have already downloaded the application by now. But, if not, you can download it from the link below:

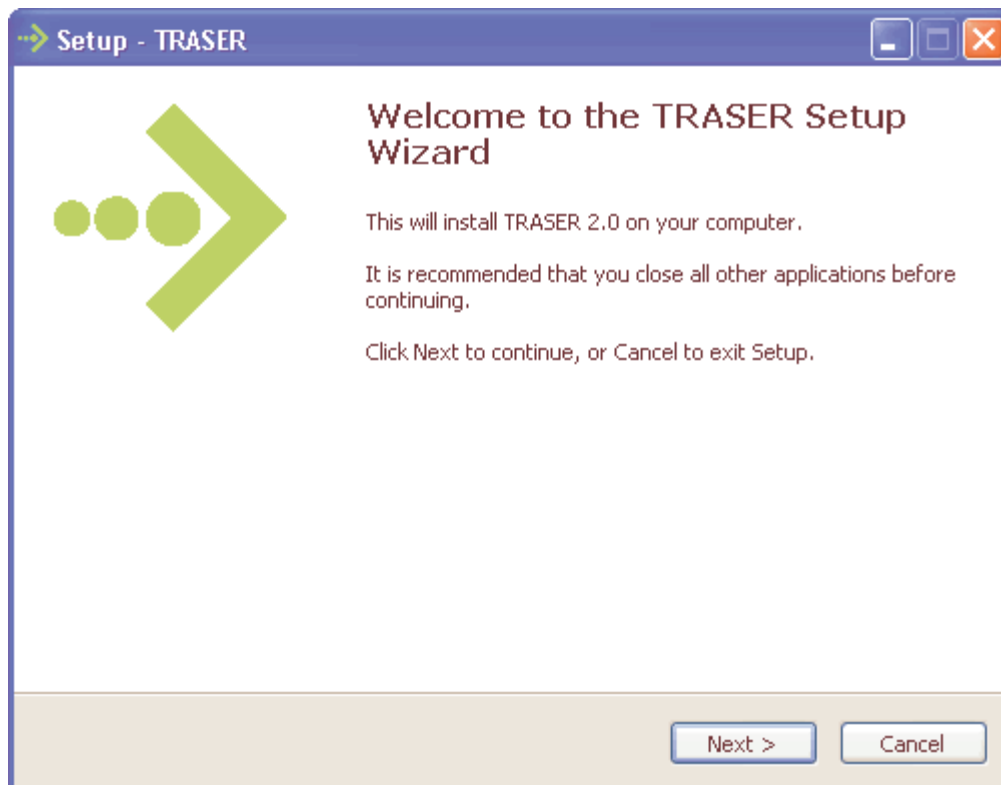
<http://www.tradeservice.com.au/downloads/TRASER-2.0WS.exe>

This will download the TRASER 2.0 application setup file to your specified download location.

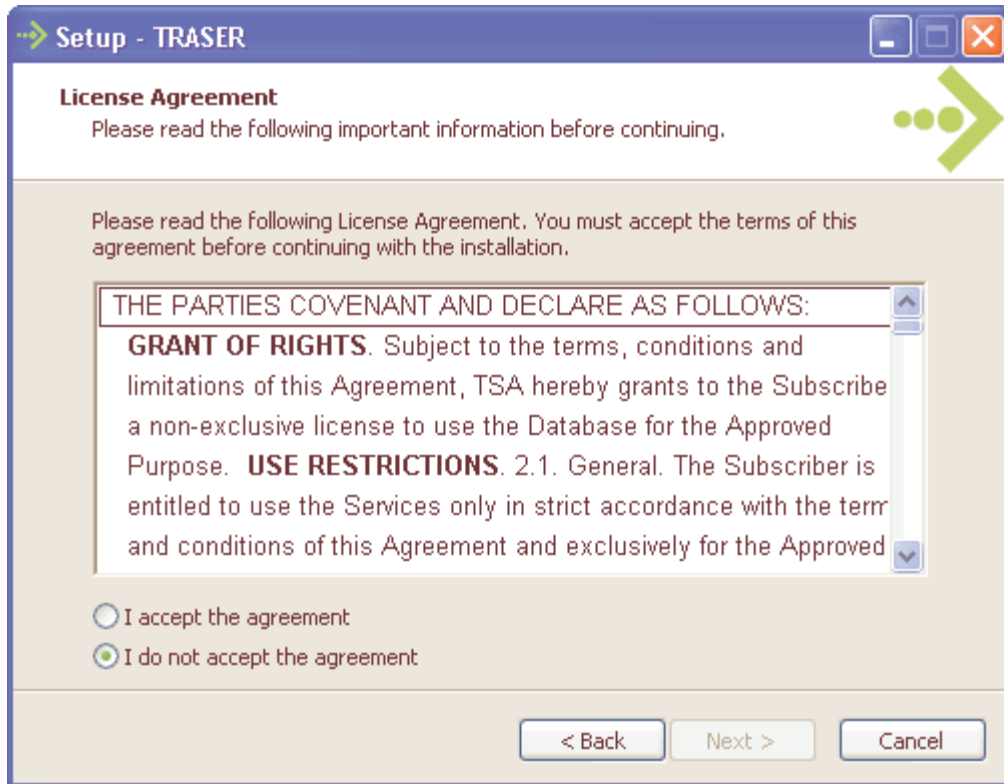
**Note for 64-bit platforms** – If installing on 64-bit platforms, you **may** need to install the SQL Express Management Components. But, only do so if TRASER 2.0 does not successfully import the initial load.

### 3. Installing TRASER 2.0

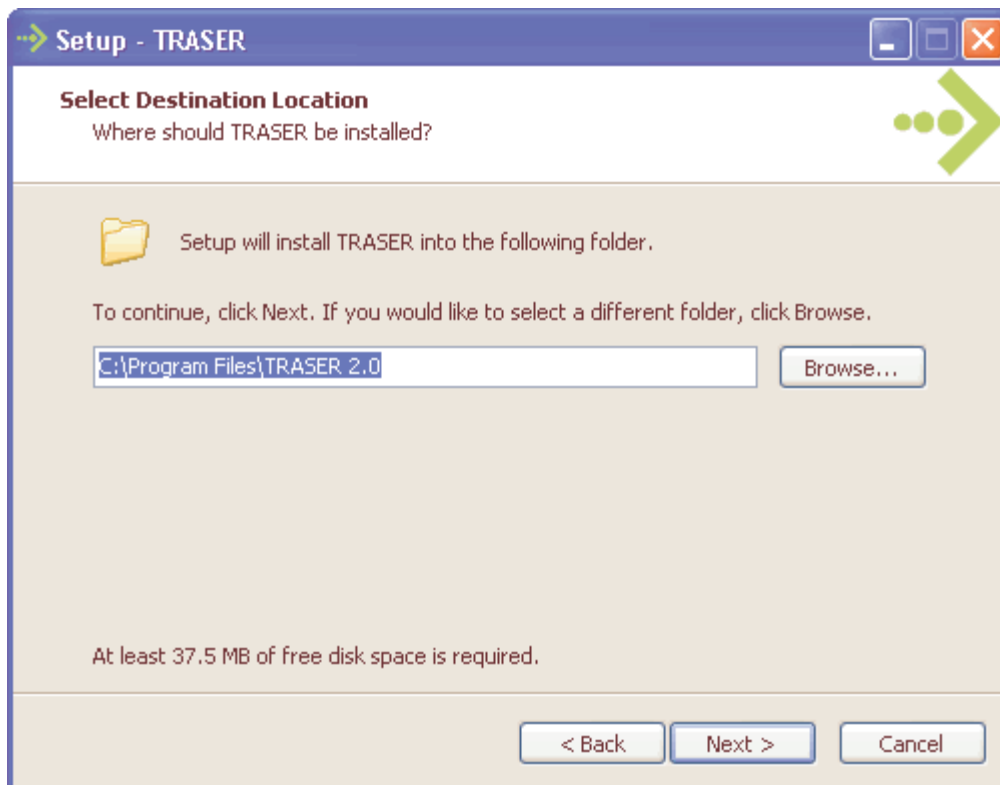
Navigate to the setup file that you downloaded and double-click the “TRASER-2.0.exe” to run the application.



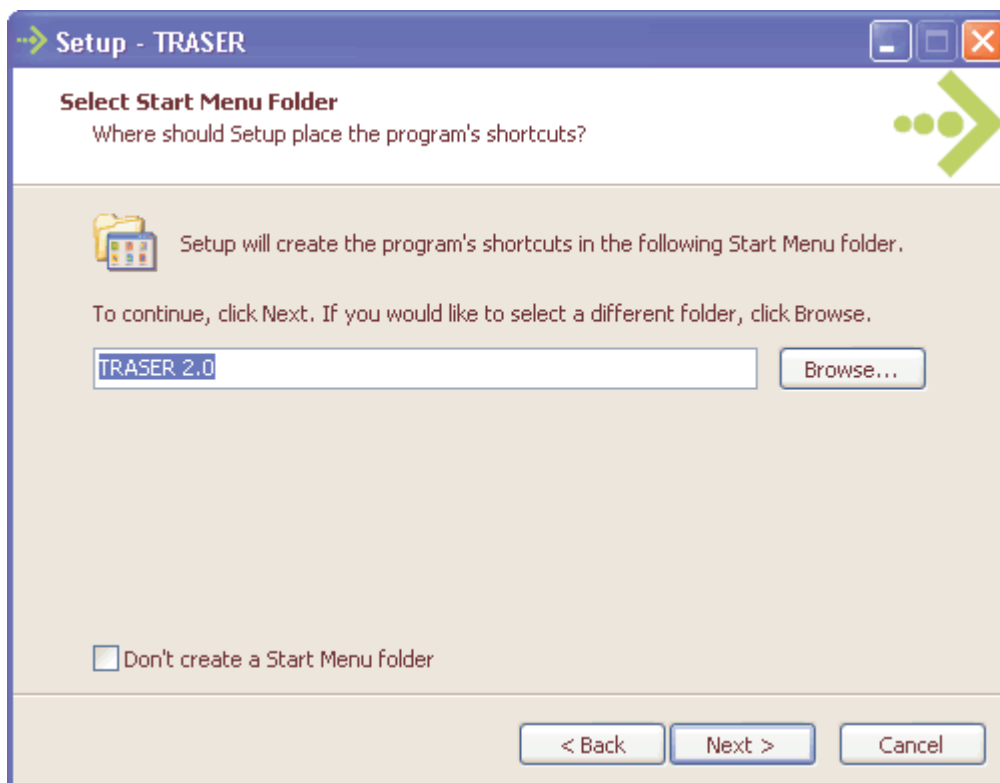
Click the “Next” button. Please read the license agreement carefully and then click the “I accept the agreement” option to proceed with the installation. Installation cannot proceed unless you accept the license agreement.



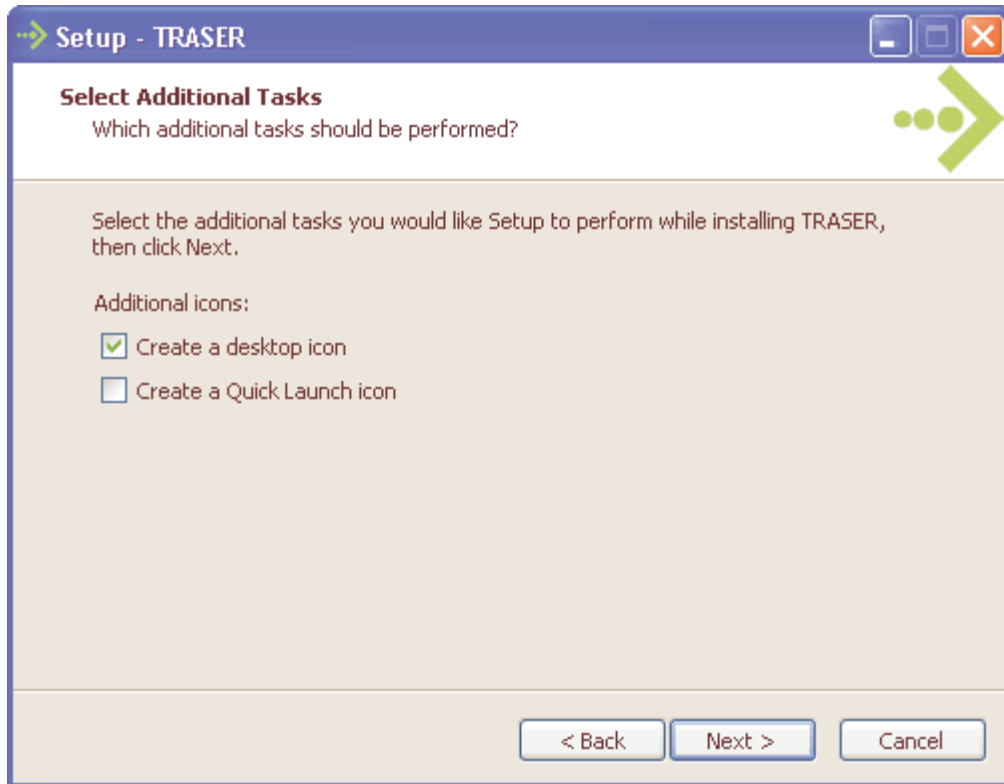
Click the “Next” button to proceed with the installation.



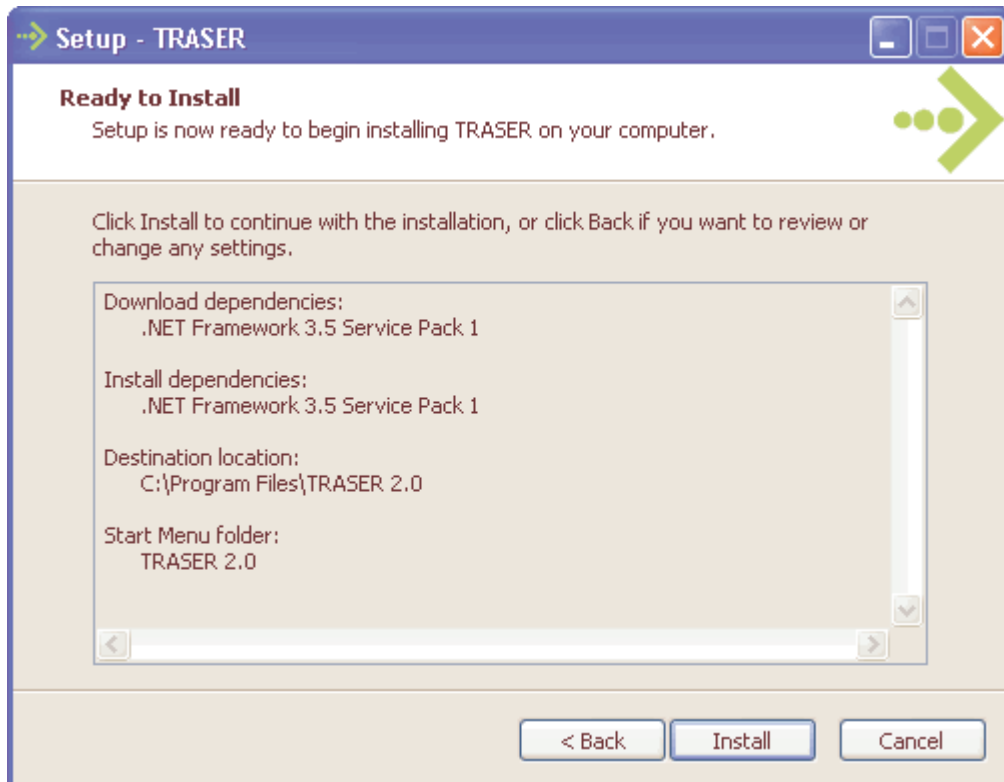
Specify where to install TRASER 2.0. It is recommended using the default option. Click “Next”.



Specify the “Start Menu” folder and then click “Next”.

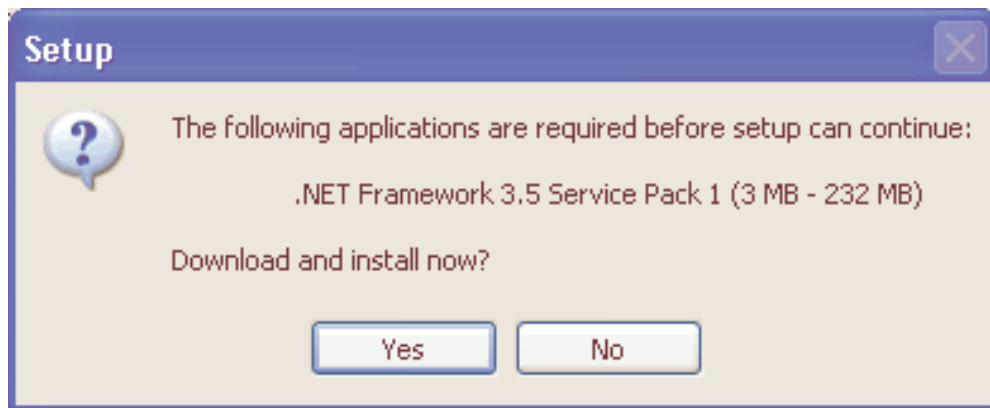


Choose whether you wish to create the quick launch and/or desktop icons. Click "Next".

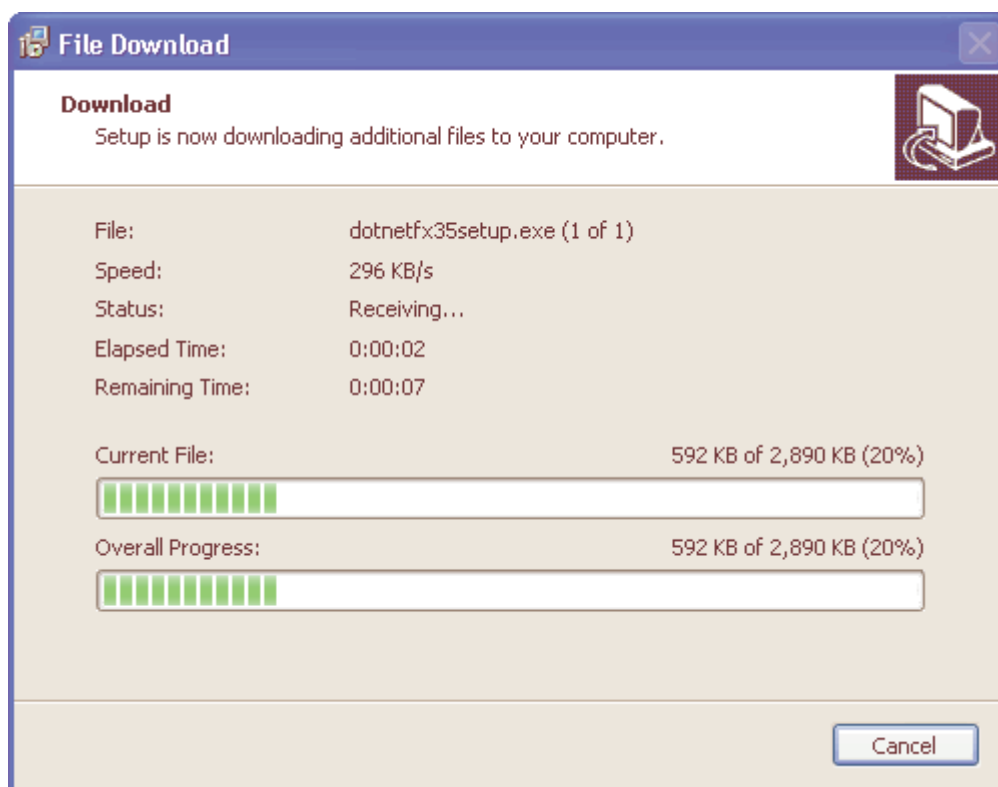


Verify the choices that you made. You may go back and change by clicking "Back". Click "Next".

**.NET Framework 3.5 Installation** - If your computer already has the .NET Framework 3.5 installed already, then the setup will automatically skip its installation. If, however, installation of the framework is required, you will see the prompt below.

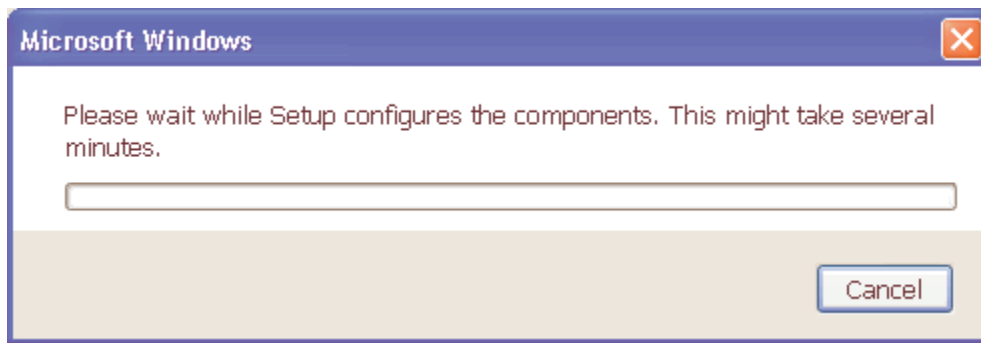


Click "Yes".

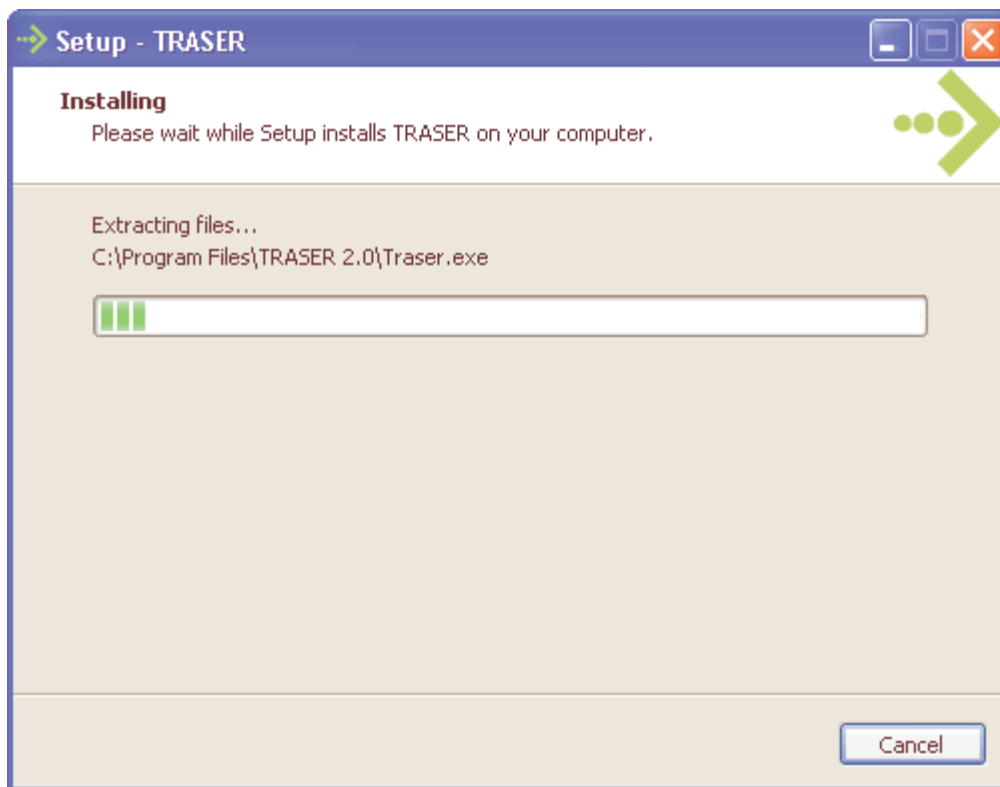


The relevant files will be downloaded and the framework will be installed.

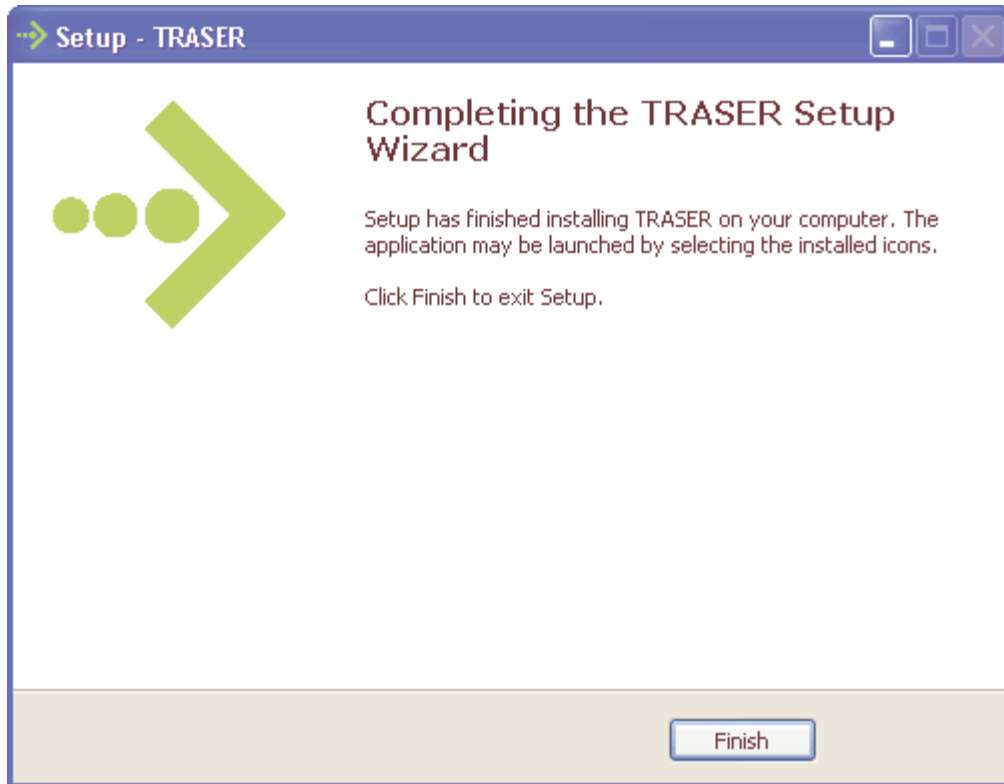
**Windows MSI 4.5 Installation** - If your computer already has the MSI 4.5 installed already, then the setup will automatically skip its installation. If, however, installation of MSI 4.5 is required, you will see prompts similar to the one above.



Once, the framework has fully installed, the TRASER 2.0 installation will begin automatically.



Once the installation has finished, you will be presented with the screen below.



Congratulations, TRASER 2.0 is now successfully installed.

## 4. Running TRASER 2.0

Once TRASER 2.0 has been successfully installed, run it by navigating to your “Start” folder and finding the “TRASER 2.0” folder and then clicking on “TRASER 2.0” shortcut. When you run TRASER 2.0 for the first time, it will do the following three steps:

- Register your TRASER 2.0 application
- Setup the database
- Run the Initial Load into the database

Each of the three steps is detailed below.

## 5. Registering TRASER 2.0

The following screen will be presented to you.

→ TRASER 2.0 | Registration

**TRASER 2.0**

To register your copy of TRASER 2.0, please call Trade Service of Australia on 1800 622 267

**Registration Info**

**Status:** UNREGISTERED

**Serial #:** 82522-5722-3408

**User:** TSA\fbloggs

**Computer Name:** TSANEW02

**App Version:** 2.0

**Activation Code:**

**System Info**

**Name:** Windows XP

**Edition:** Professional

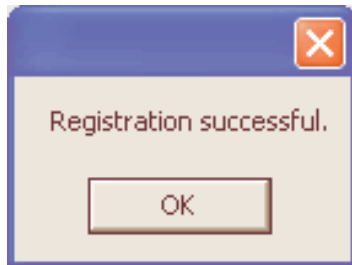
**Service Pack:** Service Pack 3

**Bits:** 32

**Version:** 5.1.2600.196608

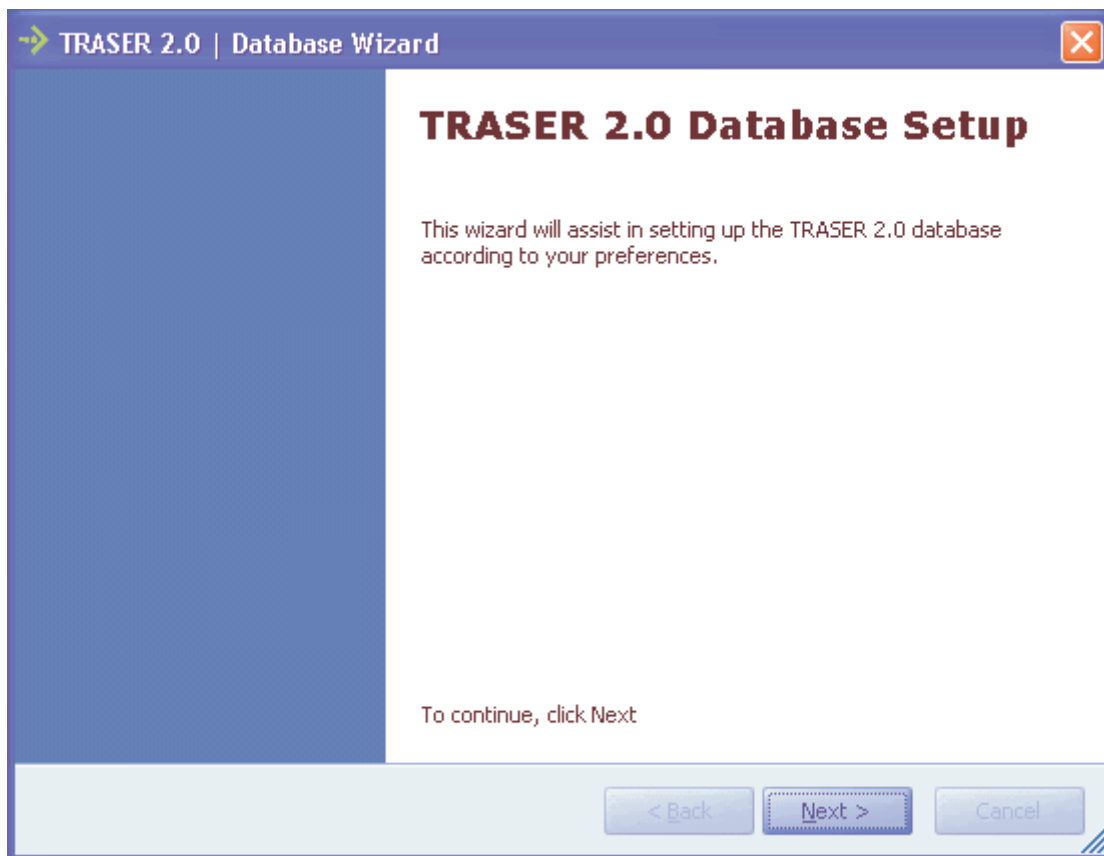
Warning: This computer program is protected by copyright law and international treaties. Unauthorized reproduction or distribution of this program, or any portion of it, may result in severe civil and criminal penalties, and will be persecuted to the maximum extent possible under the law.

Call up Trade Service of Australia on the contact number specified. Our support staff will give you an activation code which you can put into the text box named "Activation Code". Then click "Activate Application". You will be presented with a success screen as below.



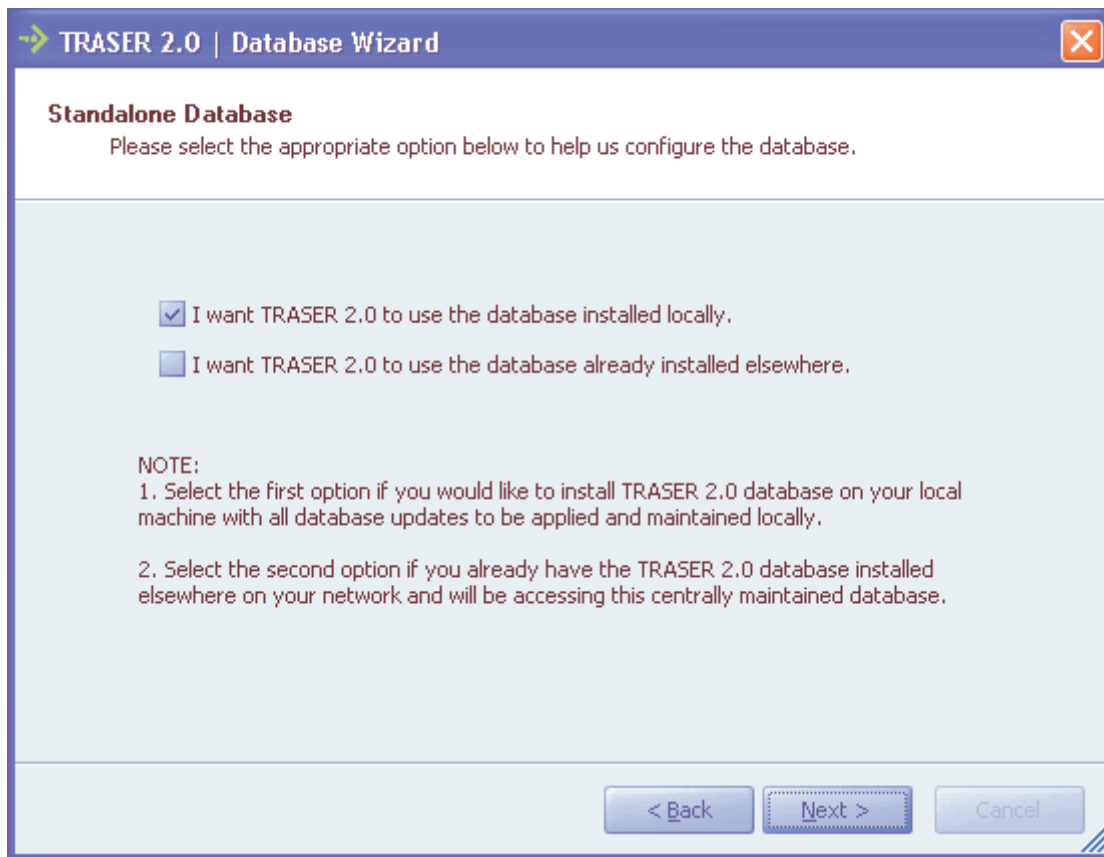
## 6. Setting up Database for TRASER 2.0

The Database Setup Wizard will start.



Click "Next" to continue.

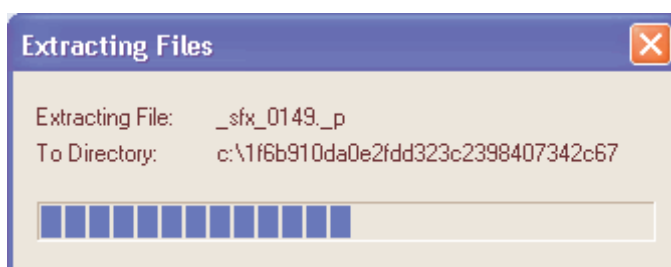
The setup wizard will give you the options to setup the database. Please read carefully and select the appropriate option.



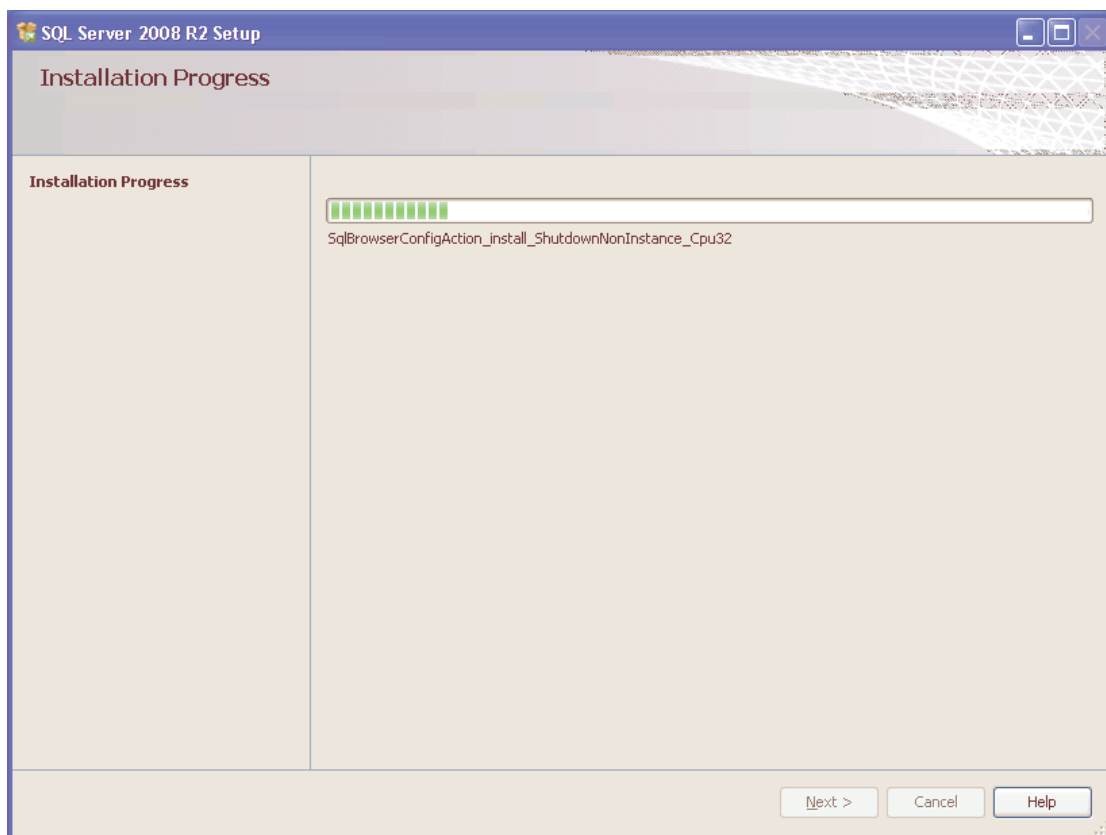
**Local Installation** – This is the default selected option. If you would like to install the TRASER 2.0 database on your local machine with all database updates to be applied and maintained locally, then select this option. Click “Next”.

The database installation will start.

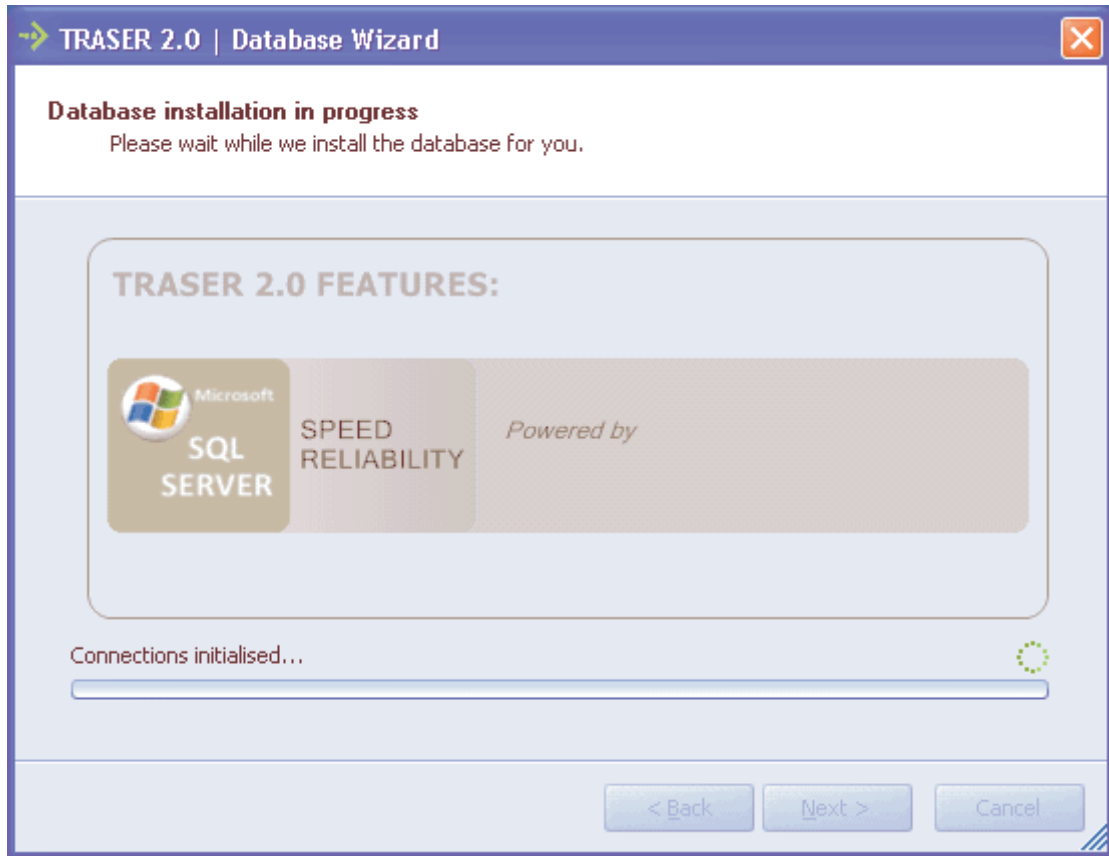
**SQL Express Installation** - If required, SQL Express files will be downloaded and installed as part of installation. If your computer has already had the “Traser” SQL Express instance installed previously, then this step will be skipped. Once the SQL Express files have been downloaded, you will see the extraction box as below.



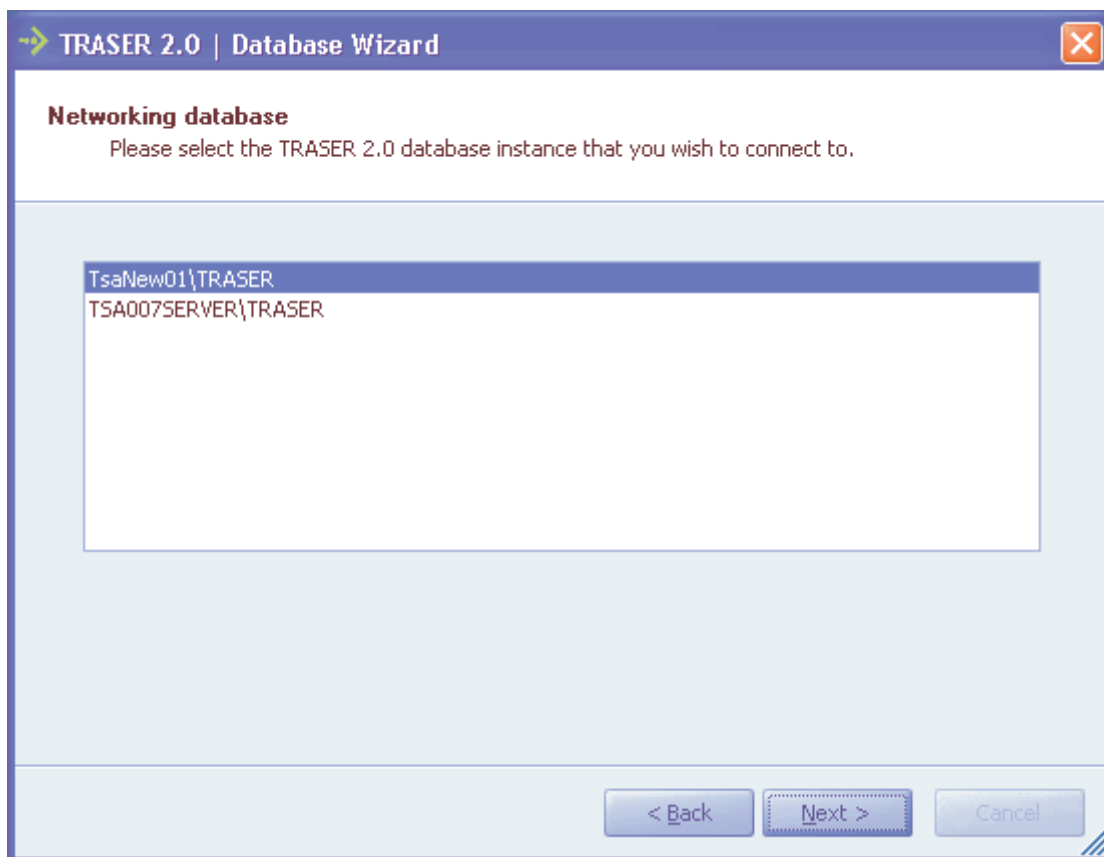
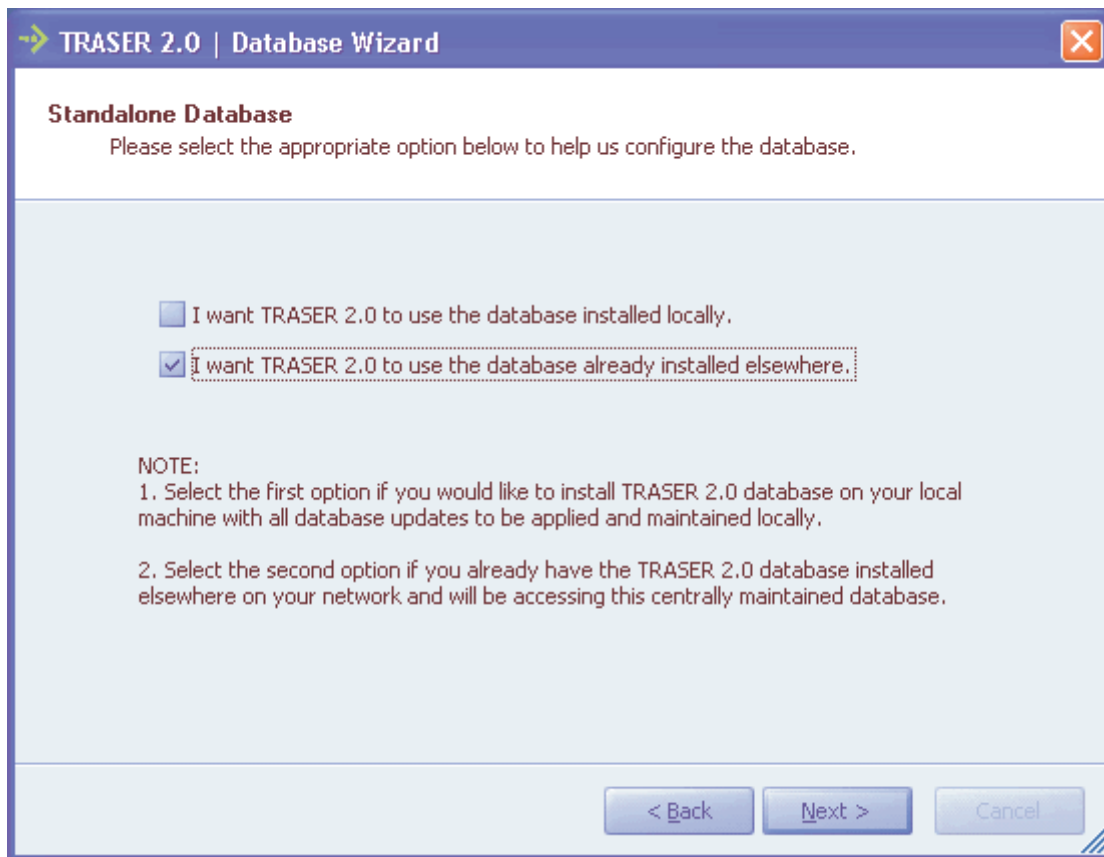
The relevant prerequisites will automatically be installed.



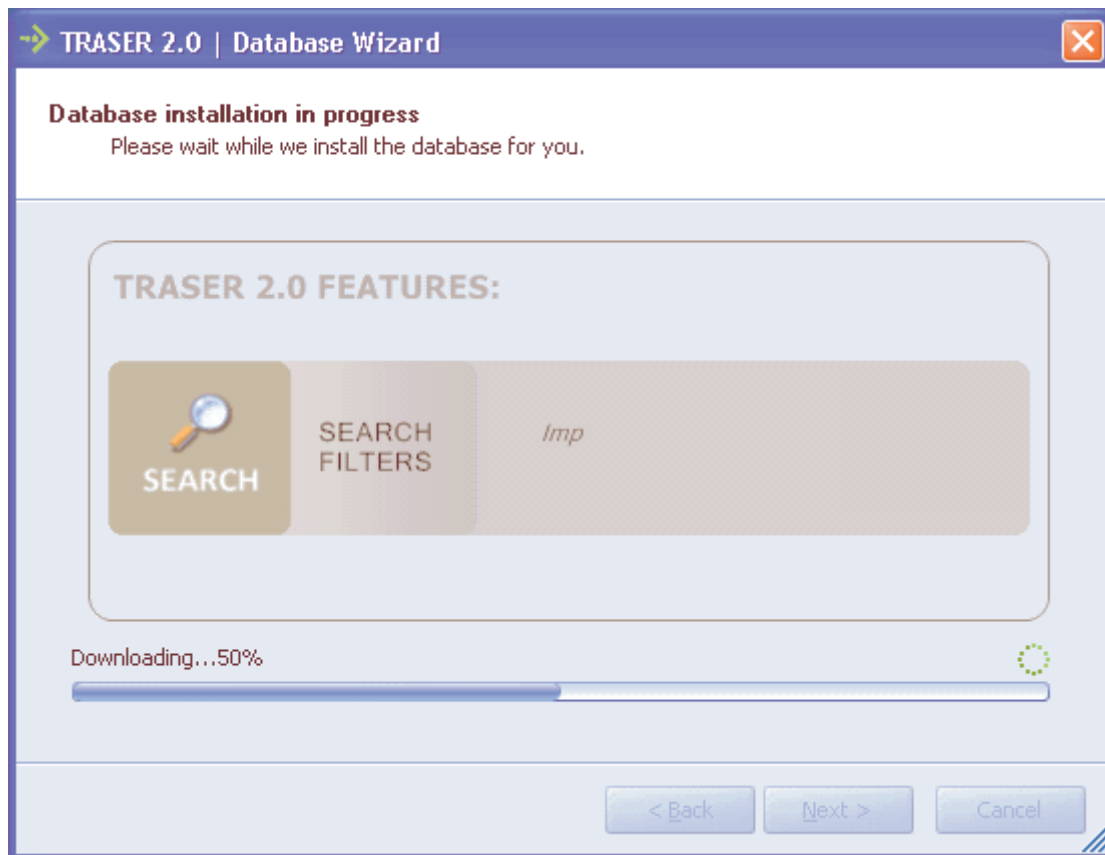
Once SQL Express has been installed, the database installation will proceed.

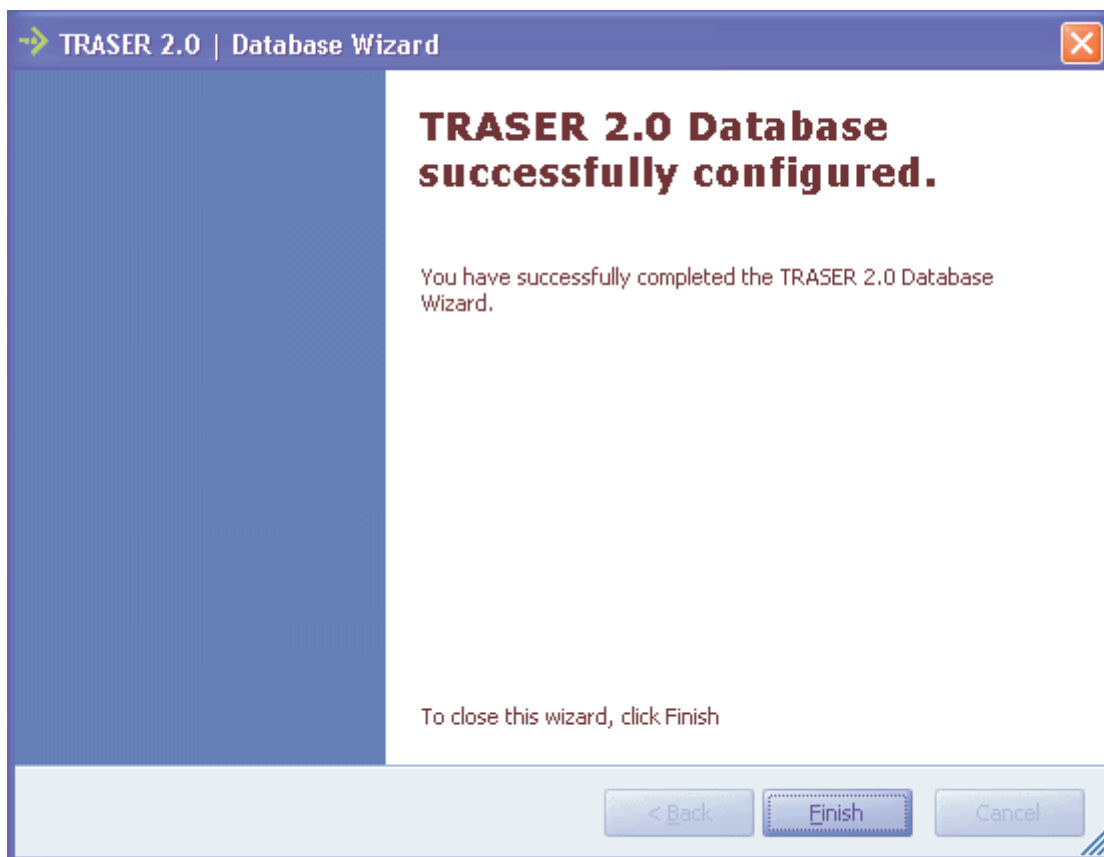
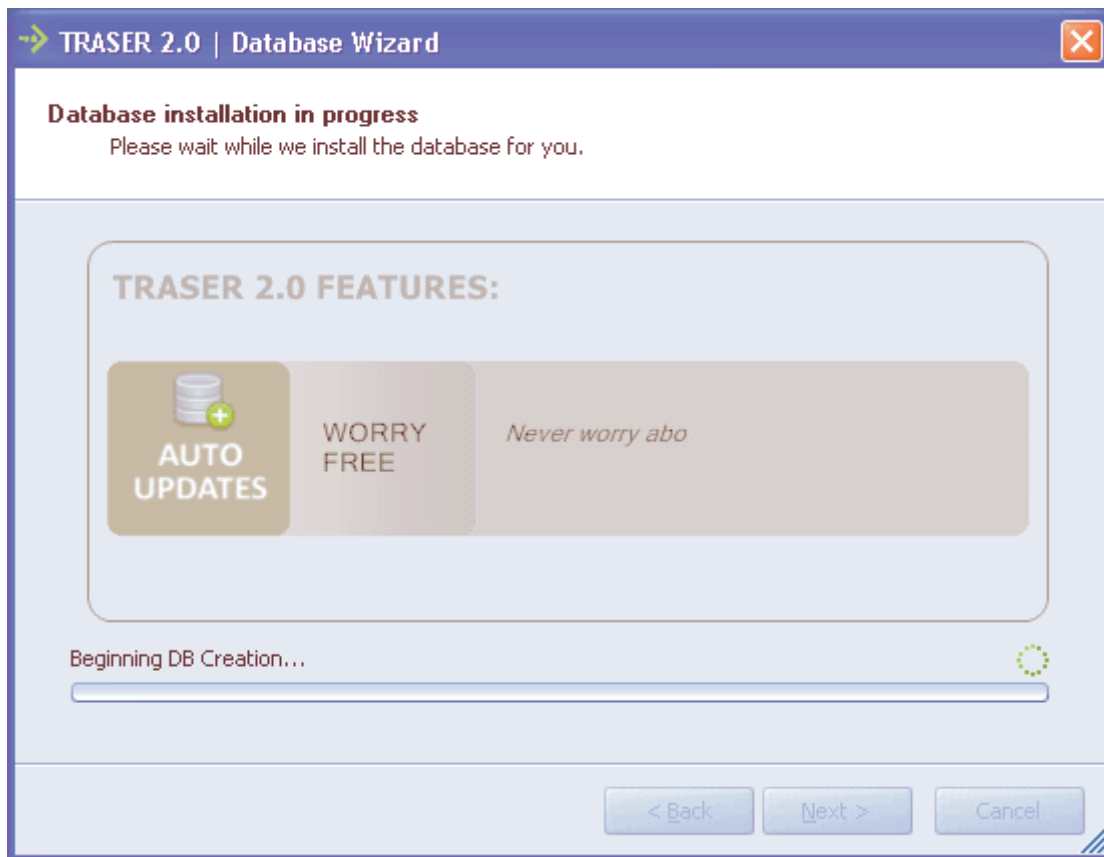


**Network Installation** –If you already have TRASER 2.0 database installed elsewhere on your network and will be accessing this centrally maintained database, then select this option. Click “Next”.



Select the appropriate option in the screen above and click "Next". The database installation will continue.

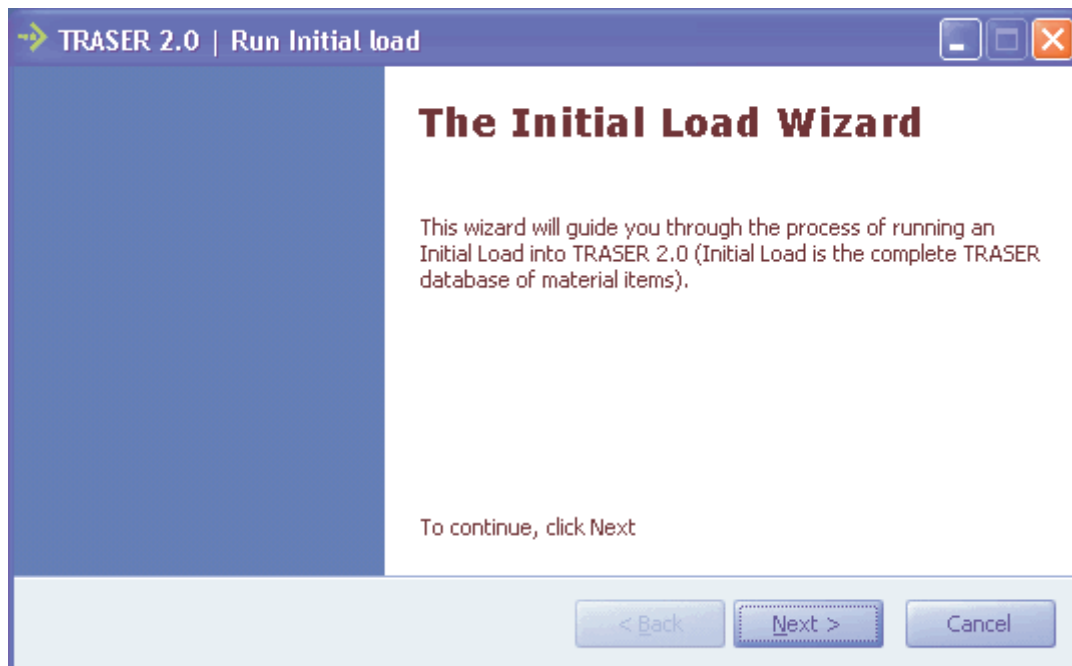




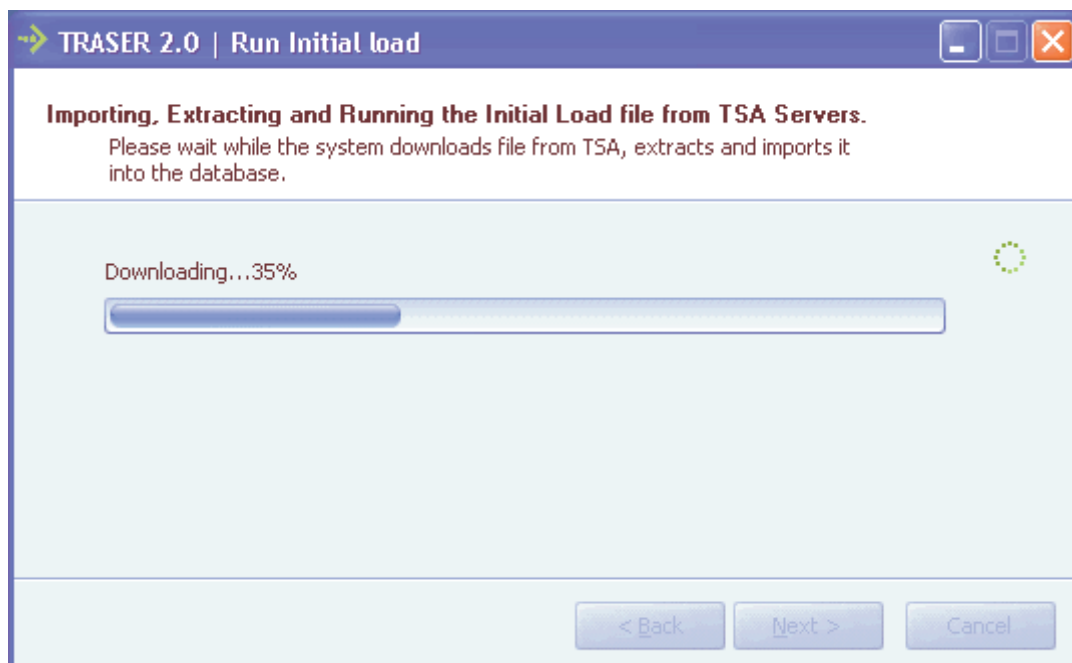
Once you see the above screen, the database has been successfully installed.

## 7. Running Initial Load into TRASER 2.0

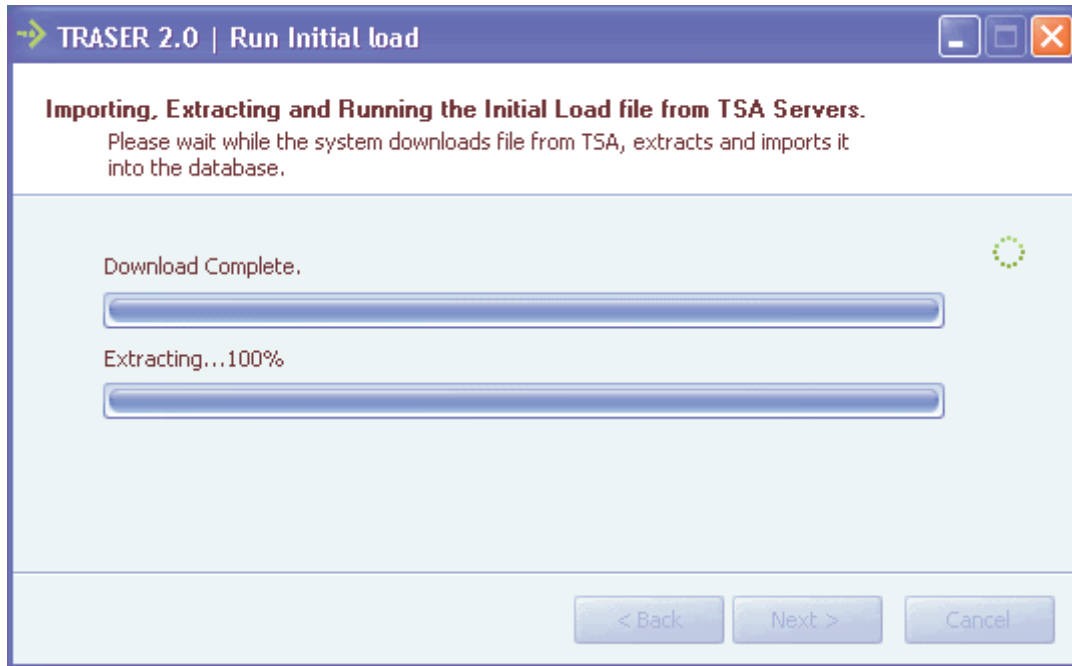
Once the database has been successfully installed, the initial load wizard will start automatically.



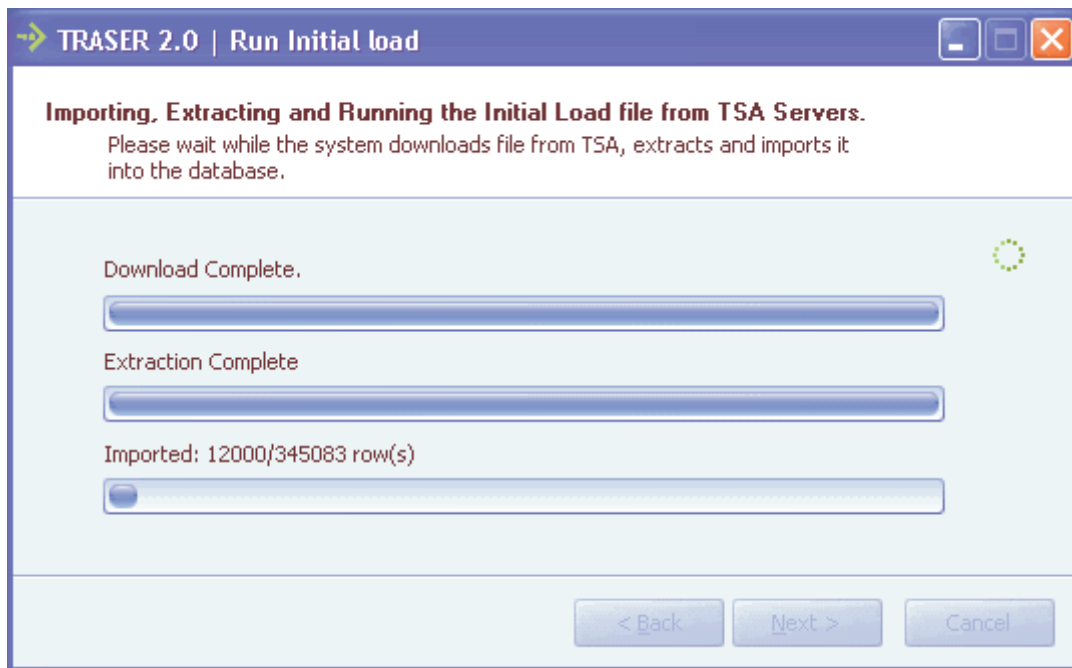
Click "Next".



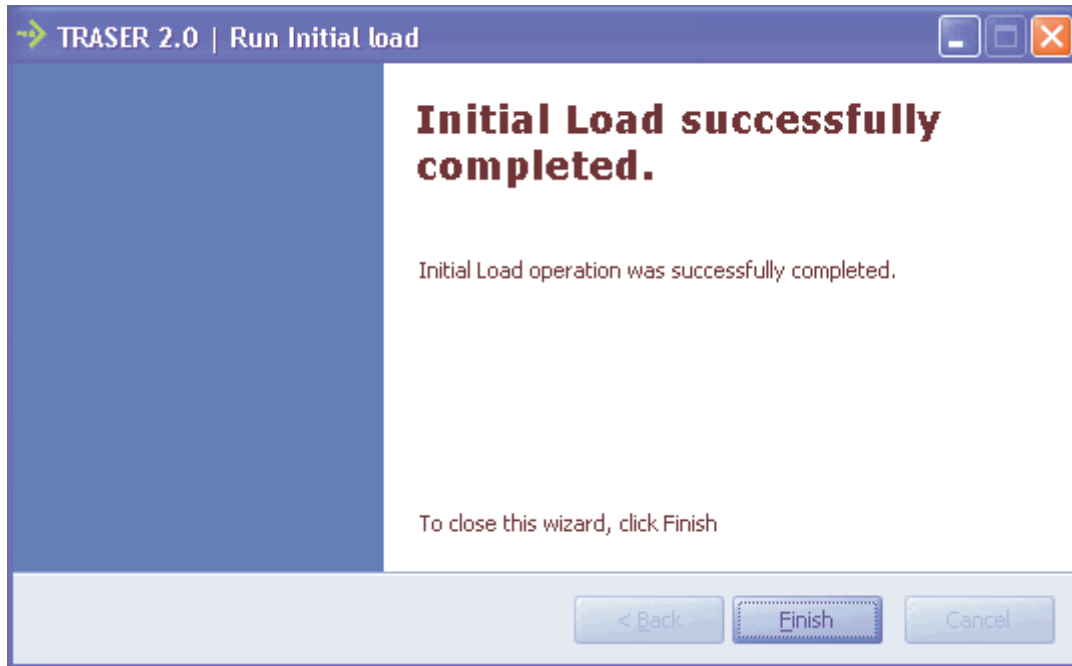
Files are automatically downloaded (see above).



Files are automatically extracted (see above).



The items data is imported into the database (see above).



Once the import process has finished, you will see the screen above. Click "Finish". TRASER 2.0 application will then start and display.